

Scan for more information

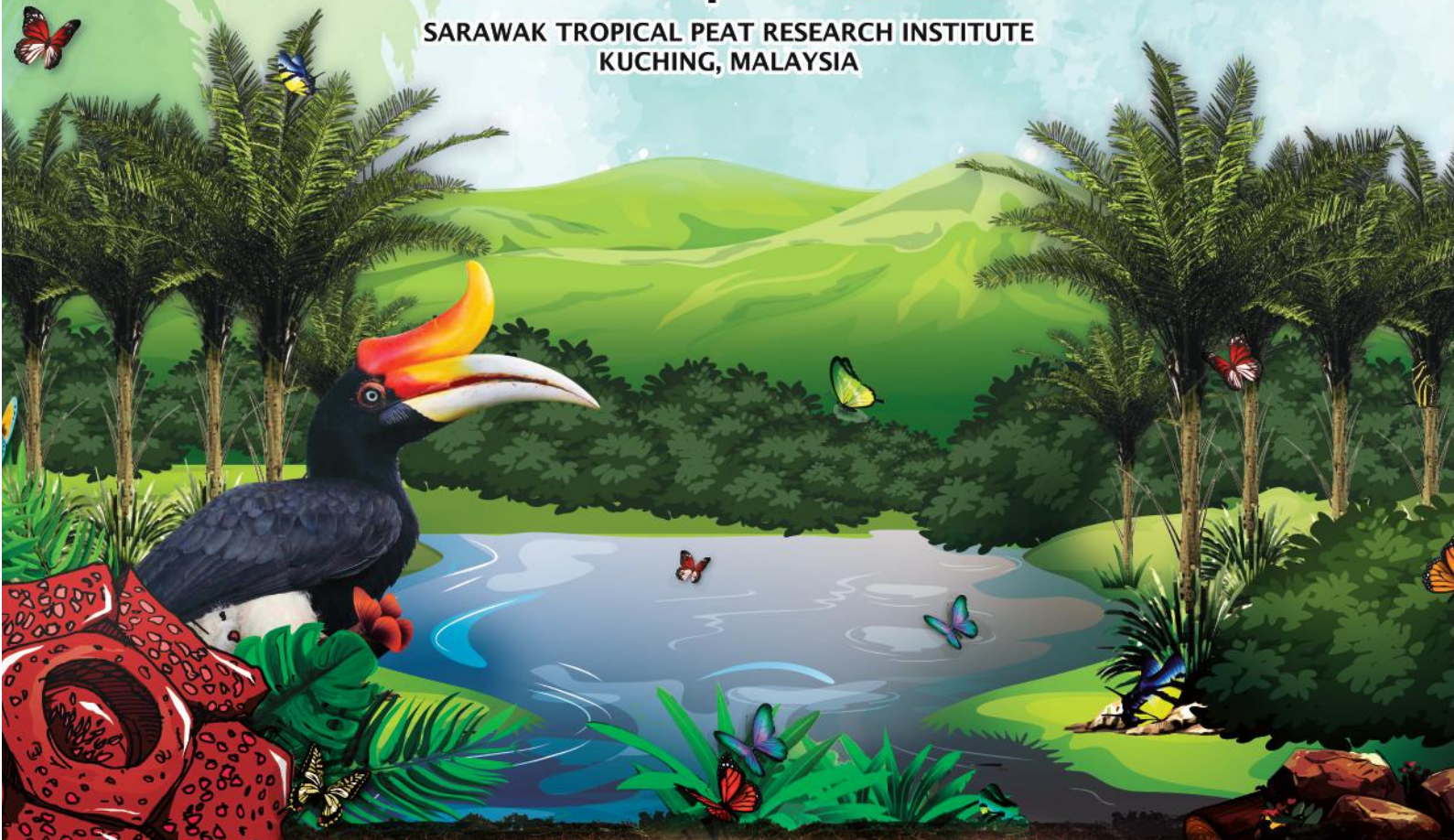


15TH INTERNATIONAL SAGO SYMPOSIUM

Unlocking the Potential of Sago Palm: Towards Sustainable Food Systems and Environmental Restoration

23rd - 26th September 2024

SARAWAK TROPICAL PEAT RESEARCH INSTITUTE
KUCHING, MALAYSIA



Organised by



In Collaboration With



Supported by



MESSAGE FROM THE ORGANIZING CHAIRPERSON



As the Organising Chairman, it is my honour to extend a warm invitation to you to participate in the **15th International Sago Symposium**, scheduled for **September 23 - 26, 2024**, in Kuching, Sarawak, Malaysia. This symposium promises to be a landmark event, focusing on the theme, "Unlocking the Potential of Sago Palm: Towards Sustainable Food Systems and Environmental Restoration."

The sago palm holds untapped potential for addressing global challenges related to food security, economic resilience, and ecological sustainability. This symposium aims to harness this potential by bringing together a diverse group of experts, practitioners, and enthusiasts from around the world.

Highlight of the Symposium:

In-depth Sessions and Presentations: Engage with leading researchers and industry experts as they share insights and latest findings on the agricultural, nutritional, and environmental aspects of sago palm and peatland restoration

Interactive Workshops: Participate in workshops designed to foster skills and knowledge in innovative cultivation techniques, processing technologies, market strategies and peatland restoration

Networking Opportunities: Connect with peers, form new collaborations, and exchange ideas with stakeholders from various sectors, enhancing both your personal and professional development

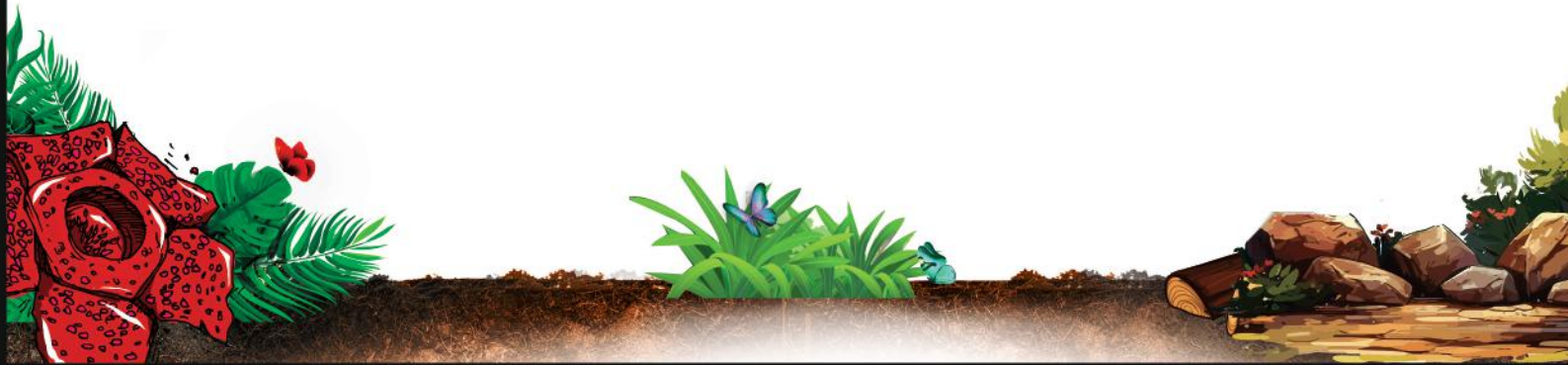
Policy Discussions: Contribute to discussions that shape future policies and investments in sago palm cultivation, focusing on sustainable practices and strategic development. We also need to discuss on how sago palm is very important for tropical peatland restoration

This event is not only an opportunity to broaden your understanding but also a platform to contribute to a global movement towards sustainability and restoration using sago palm as a key component.

We are excited to welcome you to Kuching, Sarawak MALAYSIA for a stimulating and productive symposium that promises to make a significant impact on the global stage on food security and sustainability of the tropical peatland ecosystem.

Register now to secure your place at this important gathering.

Lulie Melling, PhD DJBS FASc
Organizing Chairperson



MESSAGE FROM THE PRESIDENT OF THE SOCIETY OF SAGO PALM STUDIES



We are excited to invite you to the **15th International Sago Symposium** schedule for **September 23 - 26, 2024** in Kuching Sarawak Malaysia. This year's theme highlights the significant potential of sago palm, not only as a food crop but also as a valuable resource for industrial applications, biofuel production, and allergy-free foods. Sago palm and its related species thrive in swampy, alluvial, and peaty soils, areas where few other major crops can grow without drainage or soil improvement.

Sago palm is a critical bioresource for sustainable agriculture and rural development in tropical swampy regions. Despite its potential,

Metroxylon palms, including sago palm, remain underutilized. Traditionally harvested from natural forests or semi-cultivated with minimal maintenance, these palms offer untapped opportunities.

In recent decades, the competition between biofuel and food production has intensified. With diverse food demands and the efficient use of carbohydrates from sago palm and related species, there is a growing need for developing and utilizing swampy lands. The demand for sago palm has increased, driven by the post-pandemic new normal and the pursuit of Sustainable Development Goals (SDGs). This rising demand aligns with the need to combat environmental deterioration due to climate change, address unforeseen social problems, and enhance food security and system resilience.

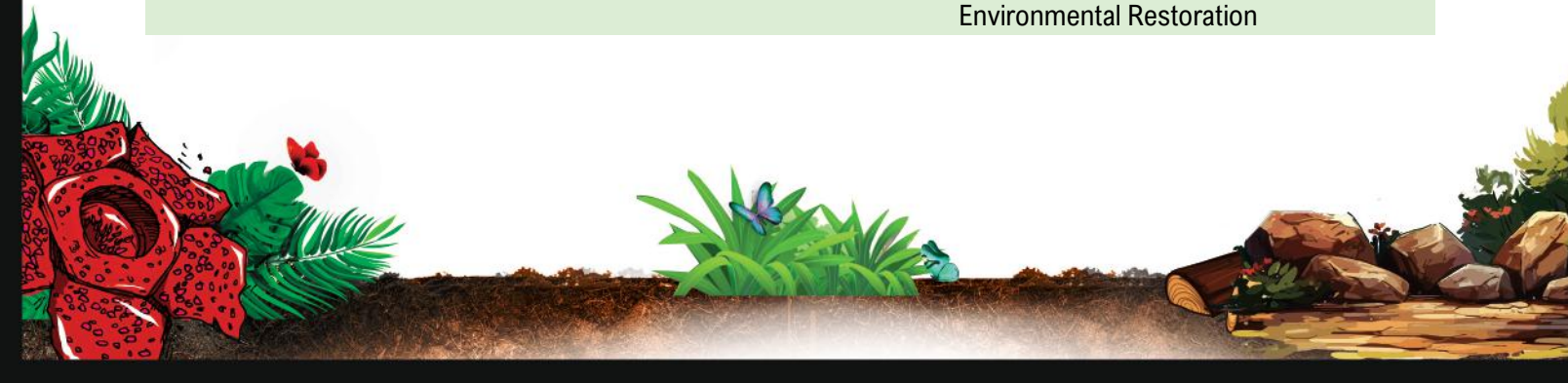
We are enthusiastic about the opportunity to share the latest research and developments with sago palm-producing and user countries. We look forward to welcoming you to Sarawak, Malaysia, for an engaging and informative symposium.

Prof. Dr. Hiroshi Ehara, M. Agr.
President, The Society of Sago Palm Studies
Director, International Center for Research and Education in Agriculture, Nagoya University



HISTORY OF SAGO SYMPOSIUM

NO	YEAR	DATE	VENUE	THEME
1	1976	July 5-7	Kuching, MALAYSIA	The Equatorial Swamp as a Natural Resource
2	1979	September 15-17	Kuala Lumpur, MALAYSIA	Starch Power to Beat the Fuel Crisis and the Equatorial Swamp as a Renewable Resource
3	1985	May 20-23	Tokyo, JAPAN	Protect mankind from Hunger and the Earth from Devastation
4	1991	August 6-9	Kuching, MALAYSIA	Towards Greater Advancement of the Sago Industry in the 1990s
5	1994	January 27-29	Hat Yai, THAILAND	
6	1997	December 9-12	Pekanbaru, INDONESIA	The Future Source of Food and Feed
7	2001	October 15-17	Tsukuba, JAPAN	New Frontiers of Sago Palm Studies
8	2006	August 4-6	Jayapura, INDONESIA	Sago Palm Development and Utilization
9	2007	July 19-21	Visayas State University, PHILIPPINES	Sago: its Potential in Food and Industry
10	2011	October 29-31	Bogor, INDONESIA	Sago for Food Security, Bio-energy, and Industry, from Research to Market
11	2013	November 6-8	West Papua, INDONESIA	Unleashing Sago: Hidden Treasure of the World
12	2015	September 15-16	Tokyo, JAPAN	Sago Supports Human and Planet Welfare
13	2017	October 3-8	Kuching, MALAYSIA	Partnership in Cooperation and Management of Sago Palm
14	2023	July 7	Tokyo, JAPAN	The Role of Sago in Achieving the Sustainable Development Goals
15	2024	September 23-26	Kuching, MALAYSIA	Unlocking the Potential of Sago Palm: Towards Sustainable Food Systems and Environmental Restoration



SYMPOSIUM THEME

"Unlocking the Potential of the Sago Palm: Towards Sustainable Food Systems and Environmental Restoration" embodies our collective ambition to understand and promote sago palm as a sustainable and economically viable food source for food security, as a biofuel and as a raw material, while playing a central role in the restoration and rehabilitation of tropical peatlands.

SYMPOSIUM OBJECTIVES

Elevate Global Recognition of Benefits of Sago Palm: Launch a global campaign to better understand the economic and environmental value of the sago palm i) for nutrition; ii) as a sustainable food system that improves food security; iii) as a bio-fuel from its biomass; iv) in rehabilitation of ecosystem by restoration of degraded landscapes, particularly peatlands; and v) for its potential to sequester carbon.

Backing United Nations' Sustainable Development Goals (SDGs): Sago palm cultivation is aligned with the United Nations' SDGs, specifically the goals on ending hunger, achieving food security, promoting sustainable agriculture, and taking action on climate change by carbon sequestration.

Strengthen international co-operation in research and innovation: Initiate a broader international joint research initiative for the sago palm. Secondary objectives would be to promote wider use of the sago palm for nutritional purposes through processing, manufacturing and product innovation, including breeding programmes to improve its resilience and yield, and the use of its biomass as a biofuel with potential overall environmental benefits through the development of sustainable farming practises that contribute to ecological restoration.

Increase policy support and investment for sago palm cultivation and utilisation: Develop strategies and policies that support the sustainable cultivation and utilisation of sago palm and serve as an acceptable investment for Green Financing. Work with governments, non-governmental organisations and the private sector to advocate for policies and secure investments that facilitate sago palm exploration and cultivation, culinary and market development of sago palm products, and highlight the role of sago palm for food security, as a biofuel and ecosystem restoration.

Promoting knowledge sharing and capacity building: A platform for organising training and knowledge sharing workshops for farmers, researchers, policy makers and entrepreneurs. The focus is on imparting and improving knowledge and skills related to the sustainable cultivation, processing and commercialisation of the sago palm to improve food security, expand economic opportunities and promote environmental restoration efforts worldwide. To create a community that supports the growth of the sago palm as an industry in a socially inclusive and environmentally sustainable manner.



ORGANISING COMMITTEE

CHAIR

Datu Dr. Lulie Melling FASc Director, Sarawak Tropical Peat Research Institute, MALAYSIA

SECRETARIAT

Sirai Daha Ministry of Food Industry, Commodity & Regional Development
Sarawak, MALAYSIA

Cynthia Ng Lee Ling Sarawak Tropical Peat Research Institute, MALAYSIA

Margaret Chan Kit Yok Associate Professor, Universiti Teknologi Mara, MALAYSIA

George Lentton Indang LCDA Agri Business Sdn Bhd, MALAYSIA

Priscilla Esther Mikin Sarawak Tropical Peat Research Institute, MALAYSIA

TREASURER

Raca Mulong Sarawak Tropical Peat Research Institute, MALAYSIA

Patricia Peturs Sarawak Tropical Peat Research Institute, MALAYSIA

ADVISORY COMMITTEE

Rosa Rolle Food and Agriculture Organization of the United Nations, ITALY

Hiroyuki Konuma Executive Director, Association for the Promotion of Self-reliance in Asia

INTERNATIONAL COMMITTEE

Hiroshi Ehara President, The Society of Sago Palm Studies / Director, International
Center for Research and Education in Agriculture, Nagoya University,
JAPAN

Yukio Toyoda Vice President, The Society of Sago Palm Studies / Vice President,
Urawa University / Former Rikkyo University, JAPAN

H. M. H. Bintoro Professor, IPB University, INDONESIA

Ahmad Junaedi Deputy Head, Field Station Management, IPB University, INDONESIA

Suzette Binongo-Lina Head, Department of Soil Science, Visayas State University,
PHILIPPINES

Kanokkorn Sinma Associate Professor, Kasetseart University, THAILAND

Kamariah Abu Salim Director, Kuala Belalong Field Studies Centre, Universiti Brunei
Darussalam, BRUNEI

Keith Galgal National Agribusiness Advisor, FAO PNG, PAPUA NEW GUINEA

Margaret Chan Kit Yok Associate Professor, Universiti Teknologi Mara, MALAYSIA

Mohd Hasnain Hussain Professor, Universiti Malaysia Sarawak, MALAYSIA

Suhaimi Napis Professor, Universiti Putra Malaysia, MALAYSIA



ORGANISING COMMITTEE

SCIENTIFIC COMMITTEE

Margaret Chan Kit Yok (Chair)	Associate Professor, Universiti Teknologi Mara, MALAYSIA
Hiroshi Ehara (Co-chair)	Nagoya University, JAPAN
Sharon Lau Yu Ling (Chief Ed.)	Sarawak Tropical Peat Research Institute, MALAYSIA
Yukio Toyoda (Exec. Ed.)	Urawa University, JAPAN
Auldry Chaddy	Sarawak Tropical Peat Research Institute, MALAYSIA
Hitoshi Naito	Kurashiki University and Science and The Arts, JAPAN
Akira Watanabe	Nagoya University, JAPAN
Takashi Mishima	Mie University, JAPAN
Wikanya Prathumyot	Rambhai Barni Rajabhat University, THAILAND
Ornprapa Thepsilvisut	Thammasat University, THAILAND
Preuk Chutimanukul	Thammasat University, THAILAND
Aidil Azhar	IPB University, INDONESIA
Koki Asano	Chitose Agri Laboratory, MALAYSIA
Muhd Norhelmi Ahmad	i-CATS University College, MALAYSIA
Mohd Hasnain Md Hussain	Universiti Malaysia Sarawak, MALAYSIA
Bala Jamal	CRAUN Research Sdn Bhd, MALAYSIA
Jong Foh Soon	PT ANJ Agri, West Papua INDONESIA

GENERAL AFFAIRS

Sarawak Tropical Peat Research Institute, Malaysia

Opening Ceremony & Gala Dinner

Faustina Elfrida Sangok
Nur Azima Busman

Food & Beverages

Priscilla Esther Mikin
Herman Umbau Lindang
Wattson Dugat

Technical

Nielsen-Nikki Zanoria

Venue & Decoration

Raca Mulong
Chesles Merikan

Exhibition & Poster

Lo Kim San

Media Design & Publicity

Elizabeth Robinson Rusbail

Excursion

Renee Sherna Laing
Lo Kim San



IMPORTANT DATES

Abstract Submissions Closed	30 May 2024
Notification of Acceptance	15 June 2024
Early-bird Registration Ends	30 June 2024
Submission of Camera-ready Paper	15 August 2024

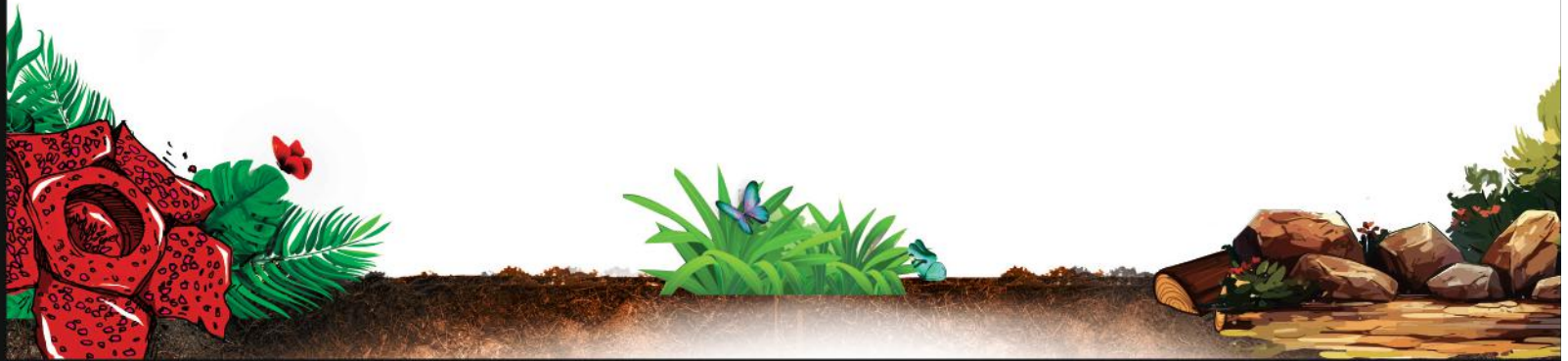
REGISTRATION FEE

Category		Early Bird (by 30 June 2024)	Standard (after 30 June 2024)	Gala Dinner
International	Regular	USD 250	USD 300	USD 50
	Students	USD 150	USD 150	USD 10
Malaysia, Low & Middle Income Countries	Regular	MYR 800	MYR 1200	MYR 50
	Students	MYR 500	MYR 500	MYR 20

15 Students Grant Available – Waiver of Registration Fees

*Low & Middle Income Countries officially listed in The World Bank

* Students enrolled in University / College are required to provide certificates of their status during submission of registration form



PROGRAMME AT A GLANCE

Time	Monday 23rd Sept	Tuesday 24th Sept	Wednesday 25th Sept	Thursday 26th Sept
0800 0900		Registration	Registration	Excursion
0900 1015		Opening & Welcoming Remarks	Scientific Session	
1015 1035		Coffee Break	Coffee Break	
1035 1235		Keynote & Plenary Session	Scientific Session	
1235 1315		Lunch & Exhibition	Lunch & Exhibition	
1315 1400	Registration, Exhibition & Poster Set up	Poster Session	Poster Session	
1400 1530		Scientific Session	Scientific Session	
1530 1545		Coffee Break	Coffee Break	
1545 1700		Scientific Session	Scientific Session	
1700 1800	Ice Breaking	Free & Easy	Closing Ceremony	
1830 1930		Cocktail		
1930 2230		Gala Dinner		



CALL FOR PAPERS

The **15th International Sago Symposium** is now inviting the submission of papers on topics relevant to the conference theme for oral/poster presentations. Prospective authors are invited to submit their abstract and full paper. Technical papers on aspects related to (but not limited to) the scope of the symposium is invited for oral presentation.

Abstract

- a) Authors are requested to submit one page abstract in English by **30th May 2024**.
- d) Abstract should contain title of abstract, author (s) name (s), affiliation and an outline of the problem examined, the methods used in study, a statement of the result and conclusions (***Refer to Abstract Guideline***).
- e) All submissions will be peer-reviewed by the Scientific Committee based on their relevance, significance, and scientific merit.
- f) Authors of accepted abstracts will be notified about the subsequent steps in the process.

Full Paper

- a) Upon **ACCEPTANCE**, authors are required to submit Full Paper in English by **15th August 2024**.
- b) Ensure your full paper adheres to the specified guidelines for formatting and content (***Refer to Full Paper Guideline***).
- c) Paper must not have been published anywhere and has order as follow:
 - Title of paper
 - Authors name(s), Affiliation(s), and addresses
 - Abstract (max. 400 words)
 - Introduction (research background and objective)
 - Materials and Methods (if applicable)
 - Results and Discussion
 - Conclusion
- d) The full paper must be between 6 and 10 pages in length, with single line spacing. This includes pictures, figures, and tables, which should comprise no more than 25% of the total content.

Please submit abstract/full paper in both Microsoft Word.doc or .docx format and PDF format to: sagosymp2024@gmail.com as an attached file.



ABSTRACT GUIDELINE

General

1. Each participant is allowed to present only ONE paper as the presenting author but may co-author multiple papers.
2. The abstract must be in English which include a title, full name (s) of the author(s), affiliation(s), body of abstract, and keywords.
3. Those whose first language is not English are strongly advised to have their manuscripts checked by a proficient third party before submission.
4. The template for Abstract can be downloaded [HERE](#).
5. Deadline for submission of abstract is **30th May 2024**.

Title

1. The title must be in Times New Roman, 14-point, bold, centered, single-spaced, and capitalize the first letter.

Authors and Affiliation

1. Author names must be in Times New Roman, 12-point, centered, bold, single-spaced, and placed below the title.
2. List each author in the following order: first name, middle name (if applicable), and surname.
3. Follow each author's name with superscripted numbers corresponding to their respective affiliations.
4. Indicate the corresponding author with an asterisk (*) and provide their email address.
5. Affiliations must be in Times New Roman, 12-point, italic, single-spaced, and placed just below the author names. Different affiliations should be identified with different superscripted numbers.
6. If all authors share the same affiliation, no superscripted number is required.
7. Separate each affiliation with a semicolon.
8. The corresponding author's email should be in Times New Roman, 12-point, centered, single-spaced, and located just below the affiliation section.

Body of Abstract

1. The abstract must be in English, NOT exceeding 250 words.
2. Use Times New Roman, 12-point, single-spaced, and justified.
3. Submit the abstract in both Microsoft Word .doc or .docx format and PDF.
4. Do not include any literature citations in the abstract.

Keywords

1. Provide 3-5 keywords. Keywords must be in Times New Roman, 12-point, and left aligned. Capitalize the first letter of the first word. Separate each keyword by a coma.



FULL PAPER GUIDELINE

Quick Guide

1. The full paper must be submitted in ENGLISH. Those whose first language is not English are strongly advised to have their manuscripts checked by a proficient third party before submission.
2. Submit the full paper in both Word Document (.doc or .docx) and PDF (.pdf) format.
3. The template for the Full Paper can be downloaded [HERE](#).
4. Deadline for submission of full paper is **15th August 2024**

Page Layout

1. Paper size A4 (210mm x 297mm) portrait (vertical) layout.
2. Margin setting: 25 mm on top, 20 mm on bottom, left and right

Title

1. The title must be in Times New Roman, 14-point, bold, centered, single-spaced, and capitalize the first letter..

Authors

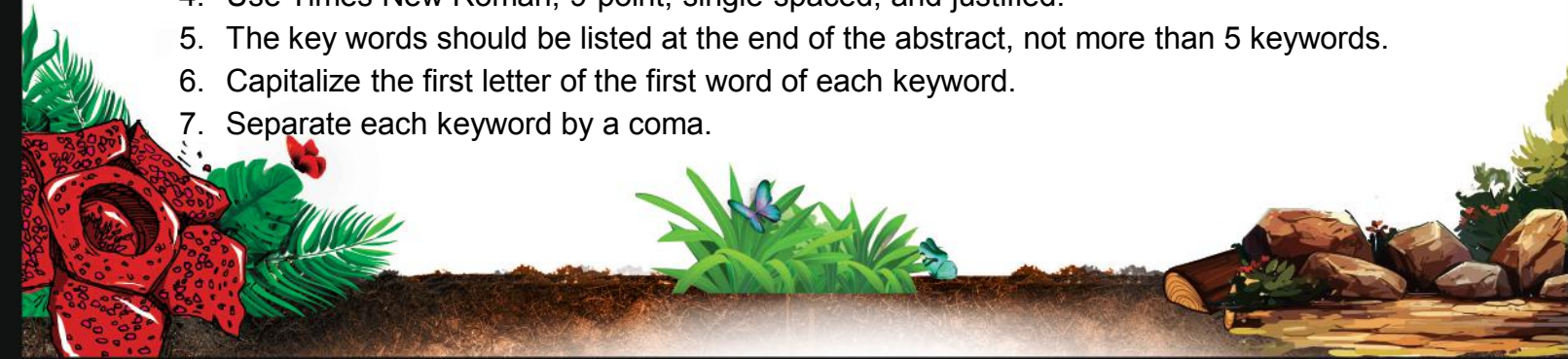
1. Author names must be in Times New Roman, 12-point, centered, bold, single-spaced, and placed below the title.
2. List each author in the following order: first name, middle name (if applicable), and surname.
3. Follow each author's name with superscripted numbers corresponding to their respective affiliations.
4. Indicate the corresponding author with an asterisk (*) and provide their email address.

Affiliation

1. Affiliations must be in Times New Roman, 9-point, italic, single-spaced, and placed just below the author names. Different affiliations should be identified with different superscripted numbers.
2. If all authors share the same affiliation, no superscripted number is required.
3. Separate each affiliation with a coma.
4. The corresponding author's email should be in Times New Roman, 9-point, italic, centered, single-spaced, and located just below the affiliation section.

Abstract

1. The abstract should come at the beginning of your paper.
2. The abstract must be in English.
3. Preferably 6 pages including its abstract (up to 250 words)
4. Use Times New Roman, 9-point, single-spaced, and justified.
5. The key words should be listed at the end of the abstract, not more than 5 keywords.
6. Capitalize the first letter of the first word of each keyword.
7. Separate each keyword by a coma.



FULL PAPER GUIDELINE

Body of the Paper

1. This includes Introduction, Materials and Methods, Results and Discussion, Conclusions and References.
2. Use Times New Roman, 9-point, single-spaced, and justified.
3. Type your text in two columns with 8 mm space in between.
4. Headings: No.1 head (chapter): Use lowercase characters in bold type and capitalize the first letter. Start from the left margin.
5. No.2 head (section): Use lowercase characters and capitalize the first letter. Start from the left margin.
6. No.3 head (sub-section): List items with no line space between them.
7. Keep a 1-line space between sections.
8. Indent two spaces at the first line of the second paragraph onwards.

Figures, Tables, Photos and Equations

1. Use a clear photos and colour prints are acceptable.
2. The figures, tables and photos should be placed on the same page of the text. If space is limited, however, they can be arranged on the following page.
3. When referring to figures, photos, tables and equations in the text, use “Fig.”, “Table.” and “Eq.”. “Equation (1)” should be used at the beginning of a sentence. All drawings and photos are referred as “Fig.”.
4. Use 9-point Times New Roman, single-spaced, and justified.
5. The first letter of the table title and figure should be capitalized.
6. The table title should be shown in the upper part of the table whereas the figure title should be shown in the lower part.
7. Equations should be marked with serial numbers, and enclose the equations' numbers in round parentheses and place them flush-right in the column
8. Keep 1-line space between the table / figure / equation and its title.

References

1. The “author and year” style of reference citation should be used in the main text.
2. If there is more than one publication in the same year for the same author(s) or even more than two authors, the letters “a”, “b”
3. “References” should be arranged alphabetically beginning with the first author's family name, and then chronologically for the same author's literature.
4. If the first author's name and year of publication are the same for more than one book, the references are arranged in the order of single authors, dual authorship, and three or more authors' literature.



ACCOMMODATION

IMPERIAL HOTEL

Jalan Datuk Tawi Sli, 93250 Kuching,
Sarawak, Malaysia

Tel : (+6) 082 588 999

Fax : (+6) 082 588 998

Email : ihkch@imperial.com.my

PULLMAN HOTEL

No. 1A, Jalan Mathies, 93100 Kuching,
Sarawak, Malaysia

Tel : (+6) 082 222 888

Fax : (+6) 082 222 999

Email : H6332@accor.com

HOTEL GRAND CONTINENTAL KUCHING

Jalan Ban Hock, 93100 Kuching,
Sarawak, Malaysia

Tel : (+6) 082 230 399

Fax : (+6) 082 230 339

Email : reservation_kuching@ghihotels.com.my

HILTON KUCHING HOTEL

Jalan Tunku Abdul Rahman, 93100 Kuching,
Sarawak, Malaysia

Tel : (+6) 082 223 888

Fax : (+6) 082 428 984

Email : kuching.info@hilton.com

GRAND MARGHERITA HOTEL

Jalan Tunku Abdul Rahman, 93748 Kuching,
Sarawak, Malaysia

Tel : (+6) 082 423 111

Fax : (+6) 082 236 041

Email : contact@gmh.my
reservations@gmh.my

RIVERSIDE MAJESTIC HOTEL

93756, Jalan Tunku Abdul Rahman,
93100, Kuching, Sarawak, Malaysia

Tel : (+6) 082 247 777 / 418 911

Fax : (+6) 082 425 858

Email : contact@rmh.my
reservations@rmh.my

HARBOUR VIEW HOTEL

Harbour View Hotel, 93100 Kuching, Sarawak,
Malaysia

Tel : (+6) 082 274 666

Fax : (+6) 082 274 777

Email : hotel@harbourview.com.my

MERDEKA PALACE HOTEL & SUITES

Jalan Tun Abang Hj Openg, Taman Budaya,
93000 Kuching, Sarawak, Malaysia

Tel : (+6) 082 258 000

Fax : (+6) 082 425 400

Email : info@merdekapalace.com

TUNE HOTEL WATERFRONT KUCHING

Jalan Tunku Abdul Rahman, 93100 Kuching,
Sarawak, Malaysia

Tel : (+6) 082 238 221

Fax : (+6) 082 237 221

Email : gse@tunehotelswaterfrontkuching.com

CITADINES UPLANDS KUCHING

55, Jalan Simpang Tiga, Kenyalang Park,
93300 Kuching, Sarawak, Malaysia

Tel : (+6) 082 281 888

Fax : (+6) 082 281 889

Email : enquiry.kuching@the-ascott.com

KUCHING PARK HOTEL

606 Padungan Road, 93100 Kuching, Sarawak,
Malaysia

Tel : (+6) 082 239 888

Fax : (+6) 082 238 799

Email : kuchingparkhotel@yahoo.com

RAIA HOTEL & CONVENTION CENTRE KUCHING

No. 1 Lot 1586, Block 17, Jalan Lapangan
Terbang, 93250 Kuching, Sarawak, Malaysia

Tel : (+6) 082 268 585

Fax : (+6) 082 268 585

Email : info@raiahotels.com.my



The 15th International Sago Symposium 2024

Registration Form

* Please complete this Registration Form using capital letters and e-mail to the Secretariat at sagosymp2024@gmail.com

1. Participant Information

Full Name *	First	Last	
Title	<input type="checkbox"/> Mr. <input type="checkbox"/> Ms. <input type="checkbox"/> Prof. <input type="checkbox"/> Ph.D. <input type="checkbox"/> Other ()		
Institution / Organization			Position
Affiliation *			
Address			
Country *			E-mail *
Tel *			Mobile

- It is mandatory to complete *Items* marked with **asterisks (*)**

2. Registration Fee (A)

Category		Early Registration (by June 30, 2024)	Standard (after June 30, 2024)	Gala Dinner
International	Regular	<input type="checkbox"/> USD250	<input type="checkbox"/> USD300	<input type="checkbox"/> USD50
	Students	<input type="checkbox"/> USD150	<input type="checkbox"/> USD150	<input type="checkbox"/> USD10
Malaysia, Low & Middle income Countries (based on World Bank classification)	Regular	<input type="checkbox"/> MYR800	<input type="checkbox"/> MYR1200	<input type="checkbox"/> MYR50
	Students	<input type="checkbox"/> MYR500	<input type="checkbox"/> MYR500	<input type="checkbox"/> MYR20

*A proof of student status from university or college is required during registration.

3. Payment Methods

<input type="checkbox"/> Local	<input type="checkbox"/> International
<input type="checkbox"/> Crossed cheque / Bank Draft <input type="checkbox"/> Bank Transfer <input type="checkbox"/> Local Order	<input type="checkbox"/> Bank Transfer
Bank Details	
Account Name : MALAYSIAN PEAT SOCIETY	
Name : RHB Bank Berhad	
Branch : RHB Simpang Tiga	
Address : 11, Jalan Simpang Tiga, Kuching 93758 Kuching, Sarawak, MALAYSIA	
Account No : 2611410001 4752	
SWIFT Code : RHBBMYKL	
Branch Code : 264	
Please submit your remittance or proof of payment together with your completed registration form to The Secretariat via email to: sagosymp2024@gmail.com before 30 August 2024. Confirmation of registration requires full payment of fees. Please instruct your bank to remit to us full amount, net of bank charges.	
For Secretariat Only	Date: _____ Reg No. _____

